



## Vibram® Design

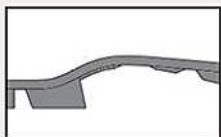
- 1 Large contact area for GRIP ON ROCK
- 2 Engraved shank for better GRIP ON UNEVEN GROUND
- 3 Vibram® MONT compound for TRACTION & SENSITIVENESS



Reinforced lugs for STABILITY and DURABILITY



Mud clearing channels for SAFETY ON HEAVY SURFACES



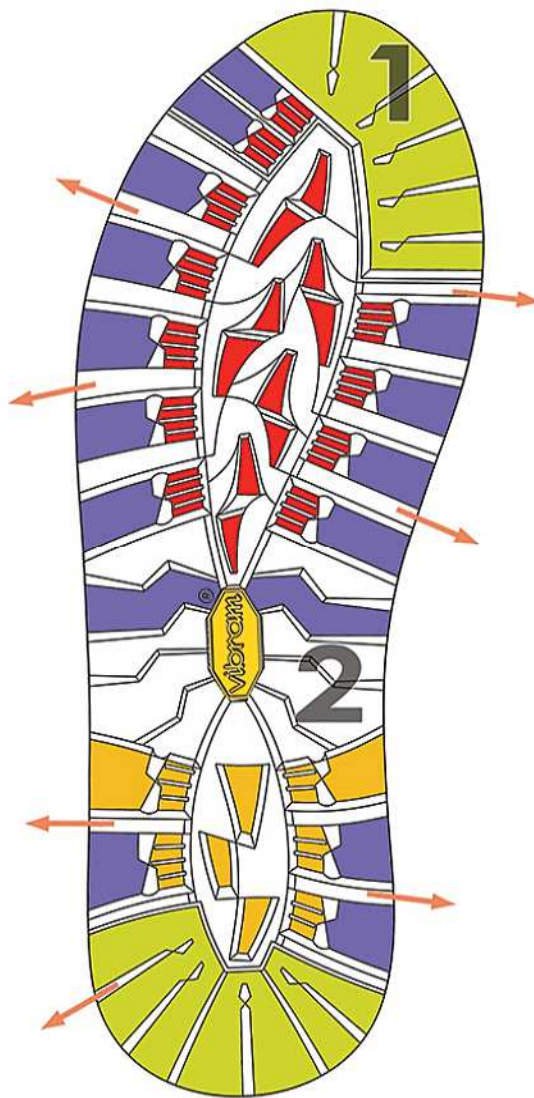
Undercut heel for DOWNHILL BREAKING PERFORMANCE

## Vibram® Compound



### TRACTION AND DURABILITY

- Tested on the world's highest peaks
- Maintains performance at extremely low temperatures
- Firmer compound for maximum support and durability



- |          |               |
|----------|---------------|
| GRIP     | CUSHIONING    |
| TRACTION | STABILITY     |
| BRAKING  | SELF-CLEANING |



Alpinism



Trekking

# Maton

